



**REGIONAL SPECIALISED METEOROLOGICAL CENTRE-TROPICAL CYCLONES, NEW DELHI**  
**TROPICAL WEATHER OUTLOOK**

---

**DEMS-RSMC TROPICAL CYCLONES NEW DELHI DATED 06.08.2021**

**TROPICAL WEATHER OUTLOOK FOR NORTH INDIAN OCEAN (THE BAY OF BENGAL AND ARABIAN SEA) VALID FOR NEXT 120 HOURS ISSUED AT 0600 UTC OF 06.08.2021 BASED ON 0300 UTC OF 06.08.2021.**

**BAY OF BENGAL:**

YESTERDAY'S, LOW PRESSURE AREA OVER CENTRAL PARTS OF NORTH MADHYA PRADESH & NEIGHBOURHOOD PERSISTS OVER THE SAME REGION. AT 0300UTC OF TODAY, THE 6TH AUGUST 2021.

CONVECTION ASSOCIATED WITH THE LOW PRESSURE AREA OVER CENTRAL PARTS OF NORTH MADHYA PRADESH & NEIGHBOURHOOD OVERLAND. ASSOCIATED BROKEN LOW AND MEDIUM CLOUDS WITH EMBEDDED INTENSE TO VERY INTENSE CONVECTION OVER WEST MADHYA PRADESH ADJOINING EAST RAJASTHAN AND ISOLATED WEAK TO MODERATE CONVECTION OVER SOUTHWEST UTTAR PRADESH NORTHEAST MADHYA PRADESH. MINIMUM CLOUD TOP TEMPERATURE (CTT) IS MINUS 90°C.

SCATTERED LOW AND MEDIUM CLOUDS WITH EMBEDDED INTENSE TO VERY INTENSE CONVECTION OVER NORTH BAY OF BENGAL, EASTCENTRAL BAY OF BENGAL, ARAKAN COAST, ANDAMAN SEA AND MODERATE TO INTENSE CONVECTION OVER SOUTH BAY OF BENGAL.

**PROBABILITY OF CYCLOGENESIS (FORMATION OF DEPRESSION) DURING NEXT 120 HRS):**

24 HOURS	24-48 HOURS	48-72 HOURS	72-96 HOURS	96-120 HOURS
NIL	NIL	NIL	NIL	NIL

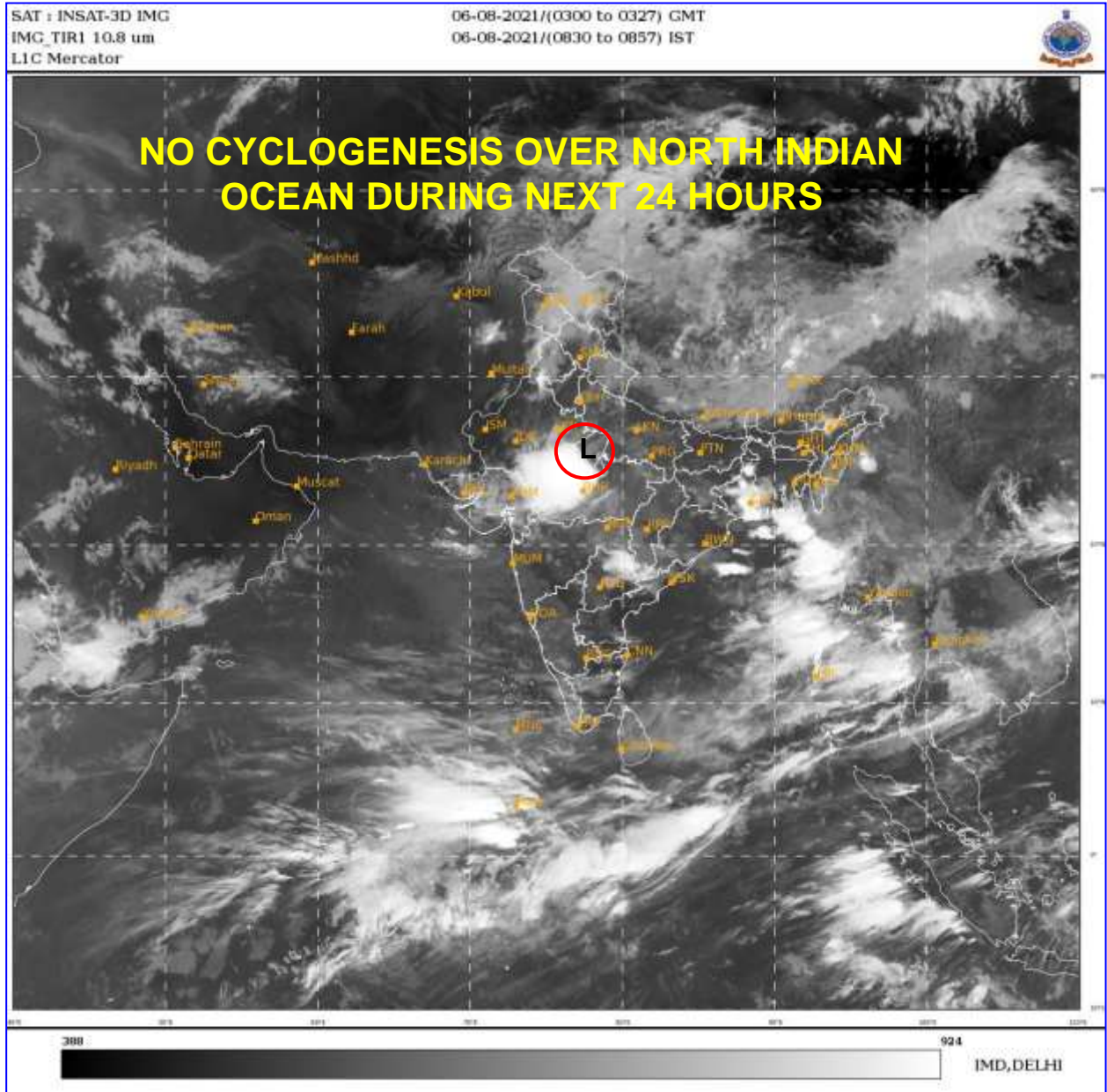
**ARABIAN SEA:**

SCATTERED LOW AND MEDIUM CLOUDS WITH EMBEDDED MODERATE TO INTENSE CONVECTION OVER SOUTHEAST ARABIAN SEA SOUTH OF LATITUDE 10.0N & ADJOINING EQUATORIAL INDIAN OCEAN.

**PROBABILITY OF CYCLOGENESIS (FORMATION OF DEPRESSION) DURING NEXT 120 HRS):**

24 HOURS	24-48 HOURS	48-72 HOURS	72-96 HOURS	96-120 HOURS
NIL	NIL	NIL	NIL	NIL

**REMARKS:** NIL



- L STANDS FOR LOW PRESSURE AREA